

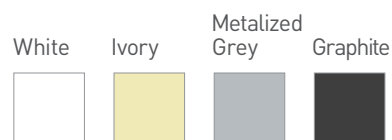
# KLIP SYSTEM

Rollease Acmeda's KLIP traditional style awning features a vertical design best suited for open style wall applications, offering up to 4m projections.

## FEATURES

- Manual or motorised system.
- Tested to withstand winds up to 50km/h.
- Finalist at R+T Innovation Prize 2009 in Stuttgart, Germany.
- Can achieve up to 14m widths & 4m projection.
- Die cast aluminium brackets and supports.
- Stainless Steel fixings.
- Colour matched components.
- Offering between 5 to 65 degree inclination.
- Patented design.

## COLOUR RANGE



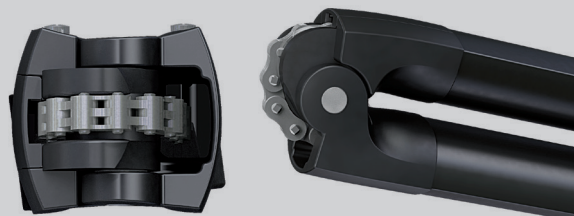
Leading innovator of precision hardware and automated shade solutions.  
USA | AUSTRALIA | EUROPE [rolleaseacmeda.com](http://rolleaseacmeda.com)

# UNIQUE ARM SYSTEM

The class performing DAT (Dynamic Arm Torsion) system design ensures optimum chain & fabric damage prevention. The awning arms open and close without touching fabric during operation. The DAT System features only stainless steel screws, bolts and pins and is the most advanced choice for your awnings.

## FEATURES

- Strong and secure eight link stainless steel chain.
- Outstanding mechanical performance.
- Fabric damage prevention.
- Teflon coated for marine grade protection.
- Arms can be adjusted to tilt in single degree increments.



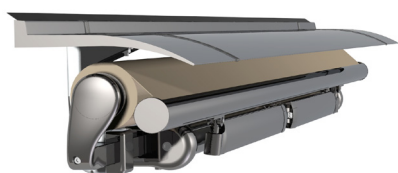
## KLIP open



## KLIP closed

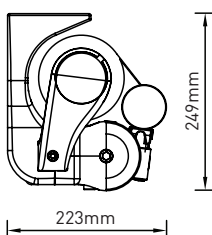


## FABRIC PROTECTING HOOD optional



## FIXING DIMENSIONS

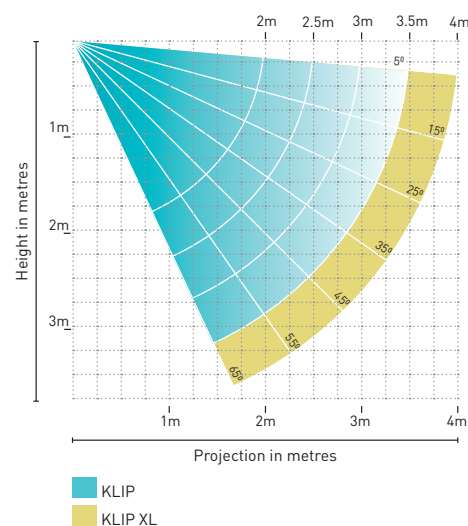
WALL/TOP FIX with folded arms  
5° incline



## MAX AWNING DIMENSIONS

Max width: 14m  
Max projection: 4m

## ARM PROJECTION



## YOUR ROLLEASE ACMEDA AWNINGS SUPPLIER:

Independantly tested and approved by

 **TÜVRheinland®**  
Precisely Right.

R+T 2009 INNOVATION PRIZE **NOMINEE**