

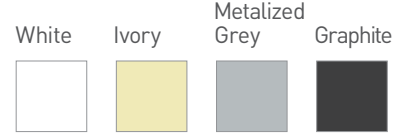
STEIN SYSTEM

The STEIN traditional style awning features a more horizontal design, best suited for installation under roof eaves.

FEATURES

- Manual or motorised system.
- Tested to withstand winds up to 50km/h.
- Can achieve up to 14m widths and 3.5m projection.
- Die cast aluminium brackets and supports.
- Stainless Steel fixings.
- Colour matched components.
- Offering between 5 to 85 degree inclination.
- Patented design.

COLOUR RANGE



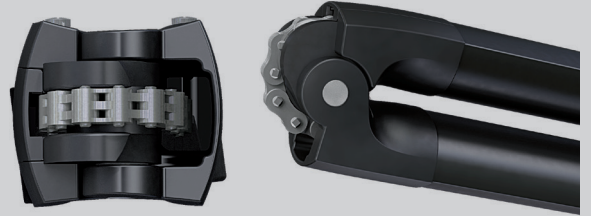
Leading innovator of precision hardware and automated shade solutions.
USA | AUSTRALIA | EUROPE rolleaseacmeda.com

UNIQUE ARM SYSTEM

The class performing DAT (Dynamic Arm Torsion) system design ensures optimum chain & fabric damage prevention. The awning arms open and close without touching fabric during operation. The DAT System features only stainless steel screws, bolts and pins and is the most advanced choice for your awnings.

FEATURES

- Strong and secure eight link stainless steel chain.
- Outstanding mechanical performance.
- Fabric damage prevention.
- Teflon coated for marine grade protection.
- Arms can be adjusted to tilt in single degree increments.



STEIN

open



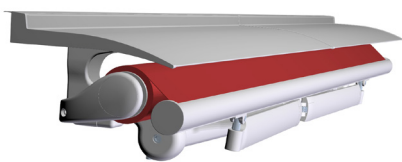
STEIN

closed



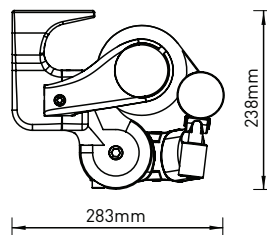
FABRIC PROTECTING HOOD

optional

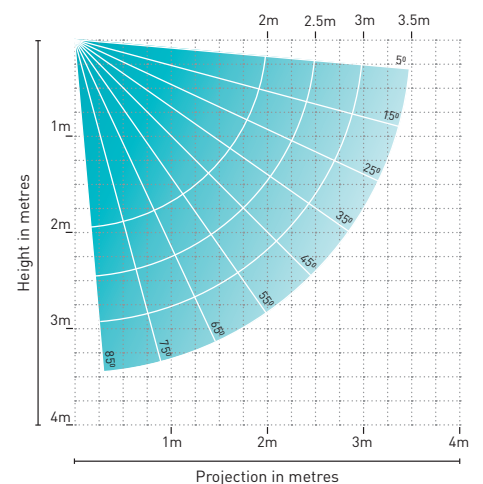


FIXING DIMENSIONS

WALL/TOP FIX with folded arms
5° incline



ARM PROJECTION



5yr Hardware Warranty

MAX AWNING DIMENSIONS

Max width: 14m
Max projection: 3.5m

YOUR ROLLESE ACMEDA AWNINGS SUPPLIER:

Independently tested and approved by

