

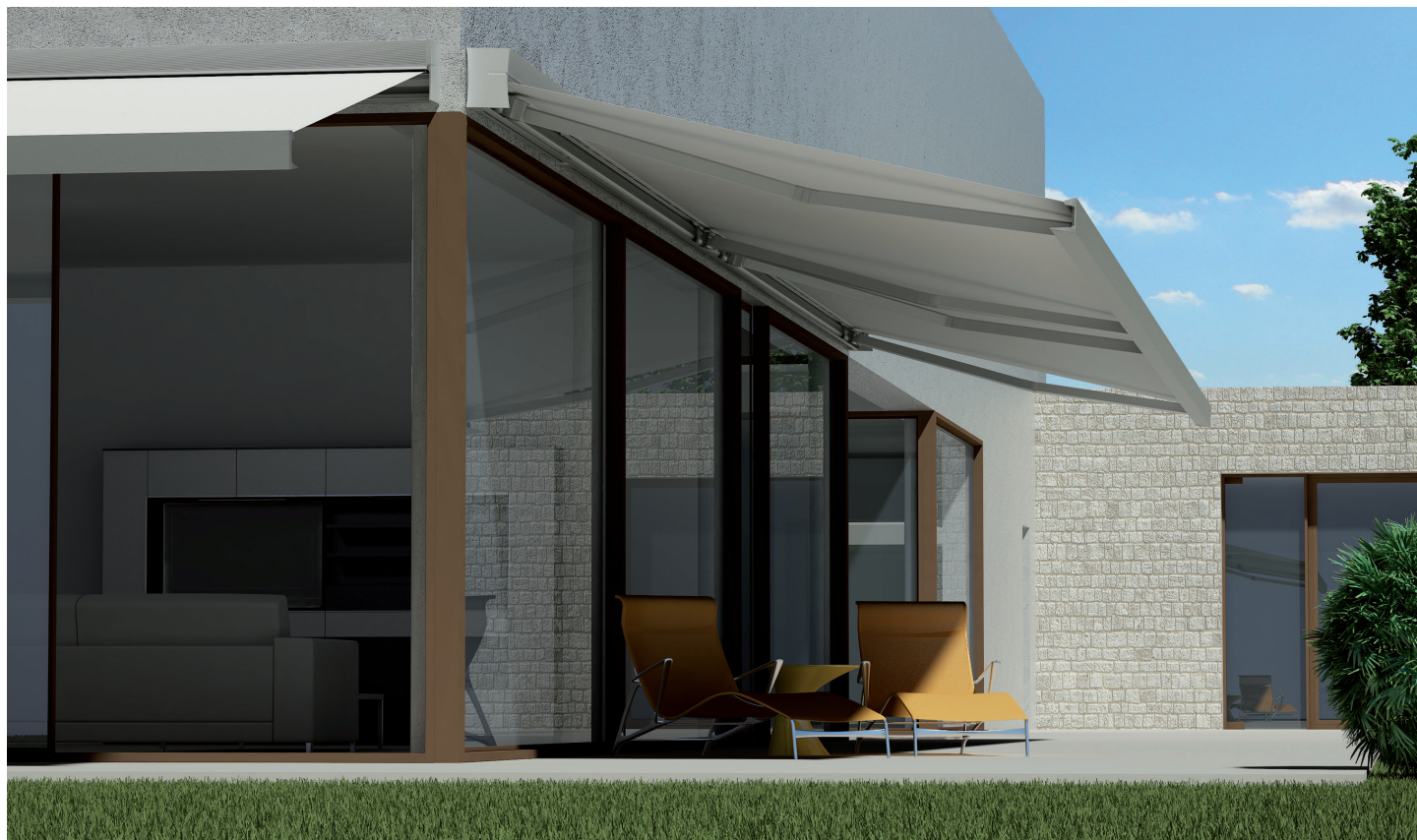
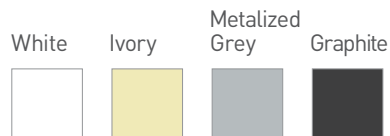
# SHAN SYSTEM

Rollease Acmeda's top of the range awning, Shan, offers state-of-the-art performance, built on ultimate design and functional qualities. A standout shading product featuring a contemporary enclosed square box offering an impressive 4m arm projection.

## FEATURES

- Motorised system
- Tested to withstand winds up to 50km/h.
- Can achieve up to 10m widths and 4m projection.
- Die cast aluminium brackets and supports.
- Easy to maintain without uninstalling.
- Stainless Steel fixings.
- Additional gasket providing water damage prevention.
- Enclosed square cassette, protecting blind when not in use.
- Enhanced cassette aesthetics for optimal outdoor appearance.
- Offering up to 40 degree inclination.
- Patented design.

## COLOUR RANGE

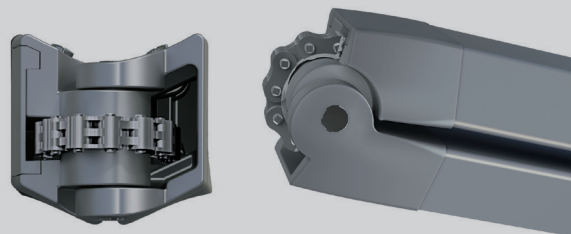


# ILIOS PIVOT ARM SYSTEM

The class performing DAT (Dynamic Arm Torsion) system design ensures optimum chain & fabric damage prevention. The awning arms open and close without touching fabric during operation. The DAT System features only stainless steel screws, bolts and pins and is the most advanced choice for your awnings.

## FEATURES

- Strong and secure eight link stainless steel chain.
- Outstanding mechanical performance.
- Fabric damage prevention.
- Teflon coated for marine grade protection.
- Arms can be adjusted to tilt in single degree increments.



**SHAN**  
open

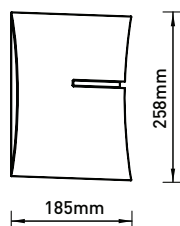


**SHAN**  
closed

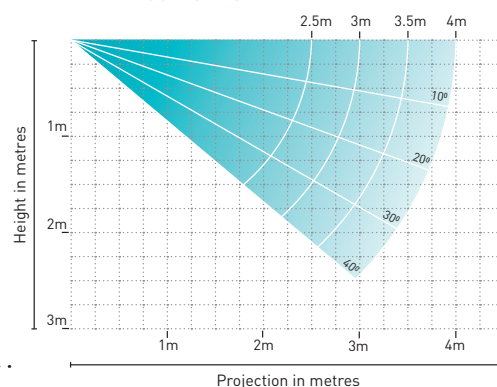


## FIXING DIMENSIONS

WALL FIX with folded arms



## ARM PROJECTION



## MAX AWNING DIMENSIONS

Max width: 10m  
Max projection: 4m

5yr Hardware Warranty

YOUR ROLLEASE ACMEDA AWNINGS SUPPLIER:

Independantly tested and approved by



2012 red dot design award winner

