

PIUMA SYSTEM

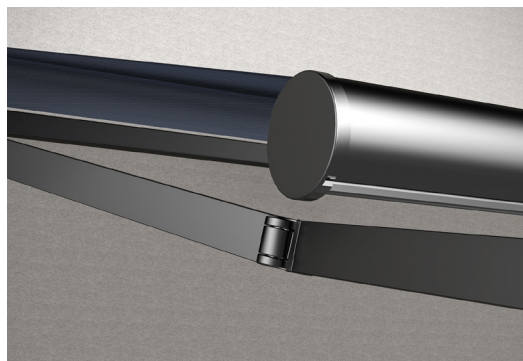
Piuma is an open style versatile awning, ideal for medium sized applications, achieving up to 6m span and 3m projections. Our European design and made Piuma awning features double stainless steel cable arms, with the performing DAT system.

FEATURES

- Manual or motorised system.
- Tested to withstand winds up to 50km/h.
- Can achieve up to 6m widths and 3m projection.
- Wall or Top fix installation
- Optional Aluminium protection hood.
- Stainless Steel fixings.
- Cable Arm with DAT System.
- Offering between 5 to 90 degree inclination.

COLOUR RANGE

White Graphite



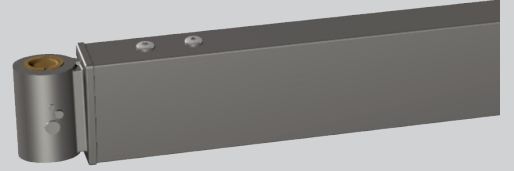
Leading innovator of precision hardware and automated shade solutions.
USA | AUSTRALIA | EUROPE rolleaseacmeda.com

CABLE ARM SYSTEM

Piuma features the Fusion Arm with a tensioned, spring loaded, double stainless steel cable, PVC coated for added protection against corrosion.

FEATURES

- Outstanding mechanical performance.
- Fabric damage prevention.
- Maximum durability
- Arms can be adjusted to tilt in single degree increments.



PIUMA

open



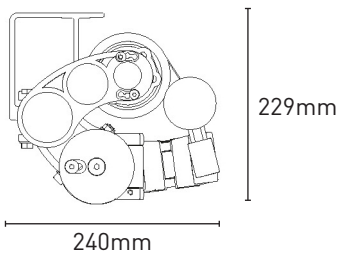
PIUMA

closed



FIXING DIMENSIONS

WALL/TOP FIX with folded arms
5° incline

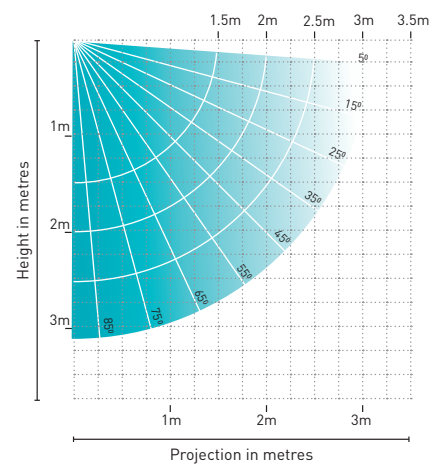


MAX AWNING DIMENSIONS

Max width: 6m
Max projection: 3m

5yr Hardware Warranty

ARM PROJECTION



YOUR ROLLEASE ACMEDA AWNINGS SUPPLIER:

Independantly tested and approved by

 **TÜVRheinland®**
Precisely Right.